

General

KOH 40-H Full Spectrum Fixture Guide

KKDÖ

Indoor | Suspended | Mid output up to 980lm

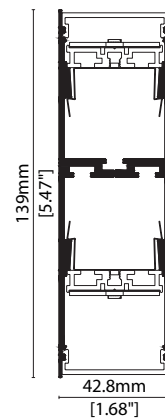


Key applications

- ✓ Ceiling
- ✓ Downlighting
- ✓ Indirect lighting
- ✓ Interior
- ✓ Office lighting
- ✓ Wall grazing

Key features

- ✓ Control Gear
- ✓ Custom lengths
- ✓ Decorative
- ✓ Diffusion: Homogenous
- ✓ Direct view
- ✓ Extensive CCT range
- ✓ Form factor: Large
- ✓ High lumen efficacy
- ✓ IP40
- ✓ Lensed
- ✓ Output high



MOUNTING METHODS



KKS-09 Suspension mounting kit



KKS-08 Ceiling rose



KKT-04 Joining bar/suspension kit

General

KOH 40-H Full Spectrum Specification sheet



Dimension	H139/W42.8/L580-1700mm (H5.47/W1.68/L22.83-66.93in)
Unit length	560/1120/1680mm (22.05/44.09/66.14in)
Chip	n-line Toyoda Gosei
Beam angle	130° (diffuser) /60° (Dark Louvre)
Colours	n-line 2700K/3000K
Bin/Step	n-line 3-step MacAdam ellipse
CRI	≥ 95
Lifetime	50,000 hours @ 25°C (50,000 hours @ 77°F)
Operating temp	T _a = -20 to 45°C (T _c max = 62.9°C) T _a = -4 to 113°F (T _c max = 145.2°F)
IP rating	IP40
Finish	Matt Silver/Grey/White/Black/Bronze Powder Coated
Cover/lens	Diffused/Prismatic/Louvre + Frosted Cover
Mounting	Surface mounting via screw fixing, suspended via suspension kit
Power feed	Male/female connectors
Control	0-10V/DALI (Integrated Power Supply)



LED Grading Key

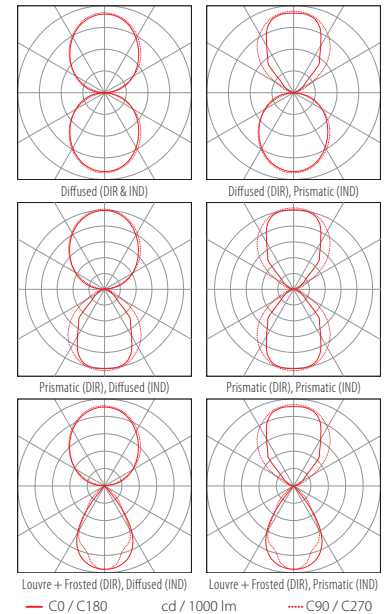
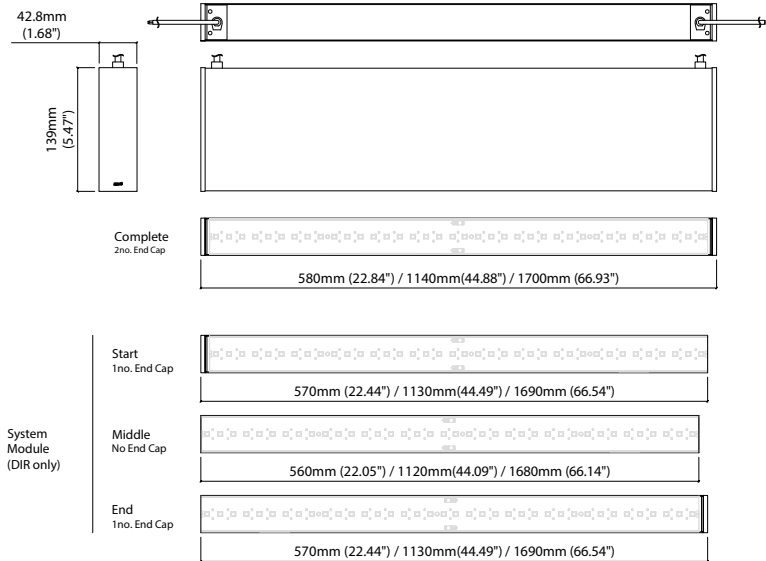
Exclusive Grade

n-line*	*KKDC tuned CCT range
Full visible spectrum	
NO UV or IR 380nm-780nm	
3-step CCT range	

PERFORMANCE DATA @ 3000K / @ 580MM COMPLETE MODULE (22.84IN)

Power consumption	Supply voltage	Supply current	Power factor:
IND-17.5W/DIR-18.5W	240V AC 50Hz	0.085A	0.94 @ 239.99V, 50Hz

	Diffused Cover (DIR)	Prismatic Cover (DIR)	Louvre + Frosted Cover (DIR)	Diffused Cover (IND)	Prismatic Cover (IND)	CRI	R9	Rf	Rg
n-line	720lm 38.3lm/W	850lm 45.4lm/W	350lm 18.4lm/W	860lm 46.4lm/W	980lm 52.8lm/W	95	74	94	100



Data derived from independent UKAS/IESNA LM-79-08 accredited testing of production samples.

KOH 40-H Full Spectrum

Code Table



FIXTURE

Model	Finish	Cover	Grade	LED Type ¹	Colour (CCT)	Length Availability ²	Lens	Module Type*	Control Type	Input
KOH 40-H (Diffused Indirect)	Matt White Paint MW	Louvre T	n	Full Spectrum 532B	2700K 27	580mm m 0580	Frosted lens FL	Complete FE	0-10V 4	AC 100V b
	Matt Silver Paint MS	Diffused C			3000K 30	1140mm m 1140		Start LE	DALI 3	AC 220-240V d
KOH 40-H (Prismatic Indirect)	Matt Grey Paint MG	Prismatic G	n	Full Spectrum 532B		1700mm m 1700	Frosted lens FL	Middle XE	No Controller 5	No PSU I
	Matt Black Paint MB				22.05in i 0022	End RE				
	Bronze Paint BP				44.09in i 0044					
					66.14in i 0066					

¹ Refer to **LED Grading Key** on **Specification sheet** page

² Refer to **Length Availability List** or enter total run length instead of length code

* Module Type (various fixture lengths)

Complete	FE	
Start	LE	
Middle	XE	
End	RE	

Code Example:

GC	-	MW	-	C	-	n	-	532B	-	30	-	m	1140	-	FL	-	FE	-	4	-	d
KOH 40-H (Diffused Indirect)		Matt White Paint		Diffused		n		Full Spectrum		3000K		1140mm		Frosted lens		Complete		0-10V		AC 220-240V	

ACCESSORIES

Mounting Accessories

KKJT-04	Joining Bar/Suspension kit
KKSW-09	Suspension Mounting Kit
KKSW-08	Ceiling Rose

Connection Accessories

KKCN-26	Power Feed Cable
---------	------------------

* Refer to **Power feed** on **Accessories** pages

PSU/Driver

0-10V/DALI (Integrated Power Supply)

* Refer to **Mounting accessories** on **Accessories** pages

LED ENGINE VARIANTS (LED STRIP TYPE)

Colour	Output	LED	Lumen/module	Wattage	Spec Doc	Length
Single CCT	Mid	532B	980/module	17.5 (IND)/18.5 (DIR)	KOH 40-H Full Spectrum	560/1120/1680mm (22.05/44.10/66.14in)
	Max	630A	2110/module	17.5 (IND)/16.5 (DIR)	KOH 40-H High CRI	560/1120/1680mm (22.05/44.10/66.14in)
	Max	957A	2190/module	33.5 (IND)/31.5 (DIR)	KOH 40-H High Power	560/1120/1680mm (22.05/44.10/66.14in)

* Performance data: (DIR) n-line, prismatic cover, 3000K, 580mm module

KOH 40-H Full Spectrum Length Availability List



KOH 40-H Full Spectrum (IND)

Length Code		Fixture Length ¹		LED Strip ²		End Cap Dimension ³		Wattage (W)	Output (lm)	
Metric	Imperial(US)	Metric	Imperial(US)	Metric	Imperial(US)	Metric	Imperial(US)		3000K (Test Data)	Range Data
m0580	i0023	580mm	22.83in	560mm	22.05in	10mm	0.39in	18.5	977	687-1016
m1140	i0045	1140mm	44.88in	1120mm	44.09in	10mm	0.39in	37	1954	1373-2032
m1700	i0067	1700mm	66.93in	1680mm	66.14in	10mm	0.39in	55.5	2930	2060-3048

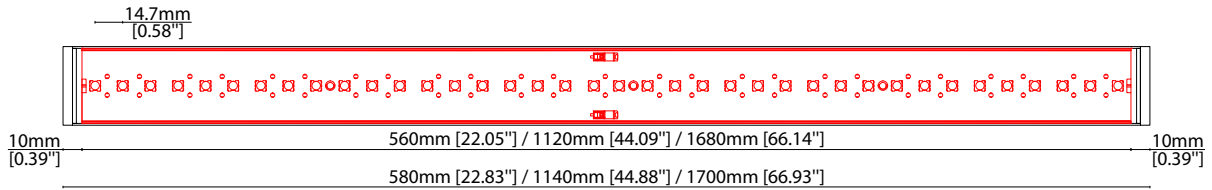
KOH 40-H Full Spectrum (DIR)

Length Code		Fixture Length ¹		LED Strip ²		End Cap Dimension ³		Wattage (W)	Output (lm)	
Metric	Imperial(US)	Metric	Imperial(US)	Metric	Imperial(US)	Metric	Imperial(US)		3000K (Test Data)	Range Data
m0580	i0023	580mm	22.83in	560mm	22.05in	10mm	0.39in	17.5	795	258-826
m1140	i0045	1140mm	44.88in	1120mm	44.09in	10mm	0.39in	35	1589	515-1653
m1700	i0067	1700mm	66.93in	1680mm	66.14in	10mm	0.39in	52.5	2384	773-2479

¹ Actual total overall length of light fixture (LED strip + end caps + void/wire hole)

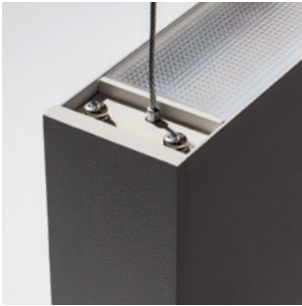
² Actual length of PCB strip

³ Actual length of 2x end caps



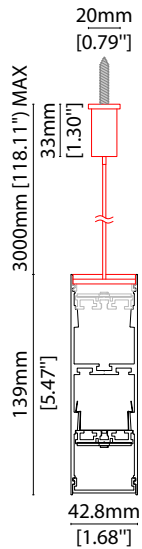
MOUNTING ACCESSORIES

Note: Accessories are to be ordered separately with corresponding code shown below.



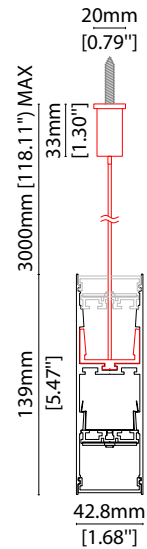
KКСW-09

Suspension mounting kit
(allow 2 per metre/40in)
Aluminium finish
W20/H3000mm
(W0.79/H118.11")



KКJT-04

Joining bar/
Suspension kit
(allow 1 per join)
L120/W42/H3000mm
(L4.72/W1.65/H5.47")



KКСW-08

Ceiling rose
Dia 127mm (5") x H 6.35mm (0.25")
Maximum weight 20kg per/kit

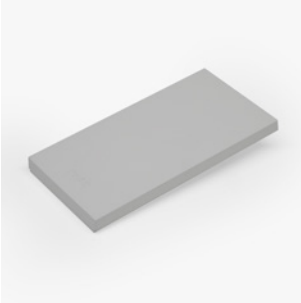
POWER CABLE



KКCN-26

Power Feed Cable

END CAPS AND LIGHT LEAK TAPE



- KKEC-S1 (2no.) - End cap pair (Mat white)
- KKEC-S2 (2no.) - End cap pair (Mat silver)
- KKEC-S3 (2no.) - End cap pair (Mat gray)
- KKEC-S4 (2no.) - End cap pair (Mat black)
- KKEC-S5 (2no.) - End cap pair (Bronze)



Black tape (prevents light leak)